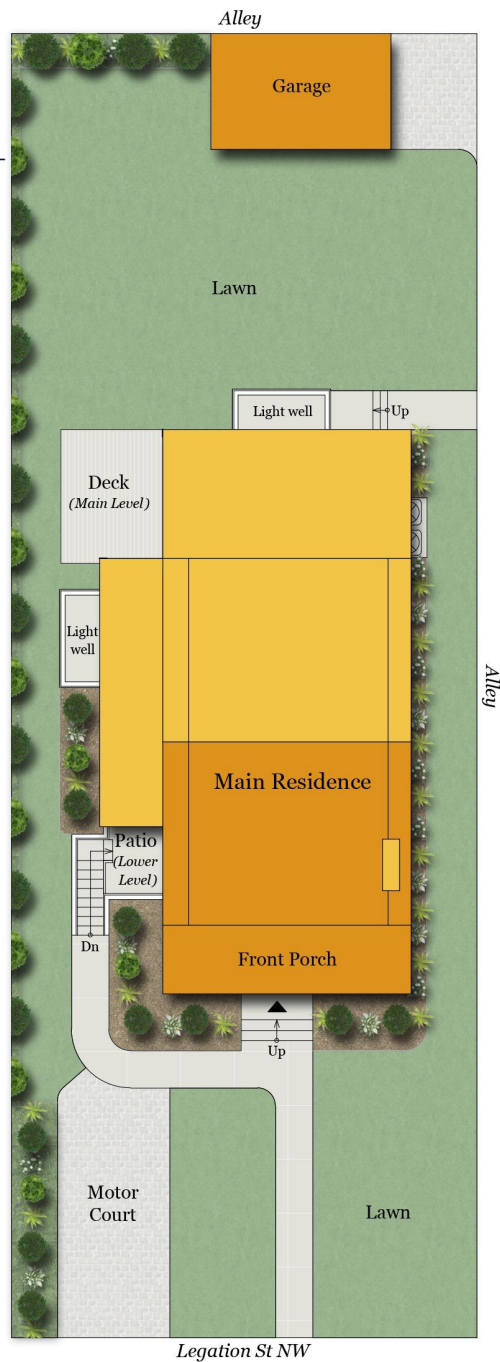


3903 LEGATION STREET, NW

WASHINGTON, DC 20015

SITE PLAN



Rendering by Floor Plan Visuals.
All measurements are approximate. While deemed reliable, no information on these floor plans should be relied upon without independent verification.

TTR | Sotheby's
INTERNATIONAL REALTY

Presented by Jonathan Taylor, TTR Sotheby's International Realty
Tel: 202.276.3344
Email: jtaylor@ttrsir.com

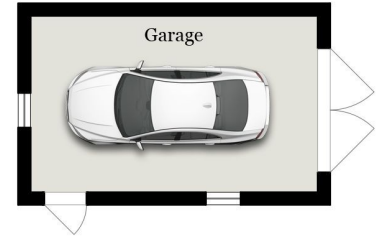
**Estimated Total Finished
Square Footage: 4,980 SQ FT**

Above-Grade: 3,395 SQ FT Below-Grade: 1,585 SQ FT
Plus 280 SQ FT Detached Garage
Plus 20 SQ FT Mech Room on Lower Level
Calculated per ANSI Standard Z765-2003.

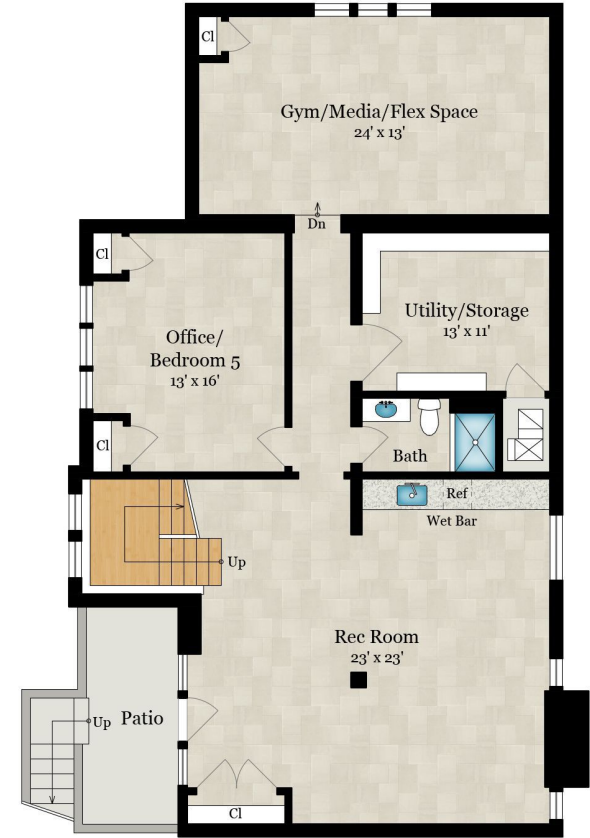
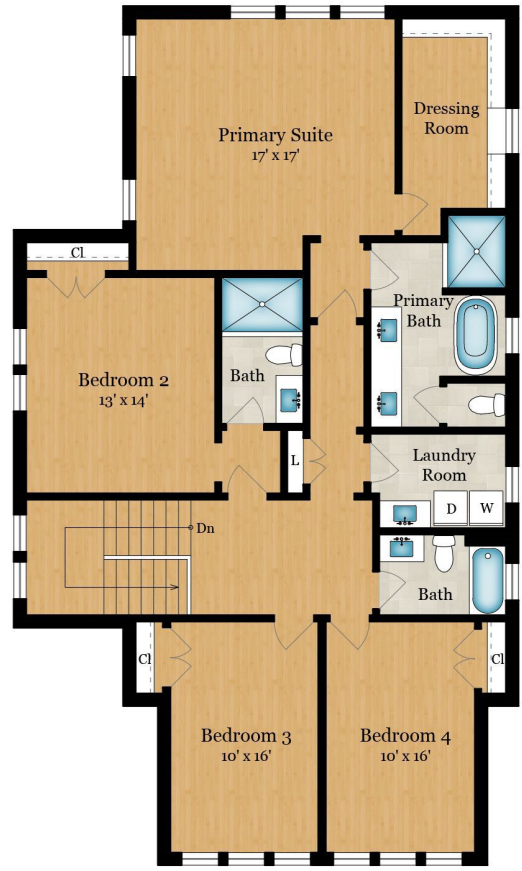
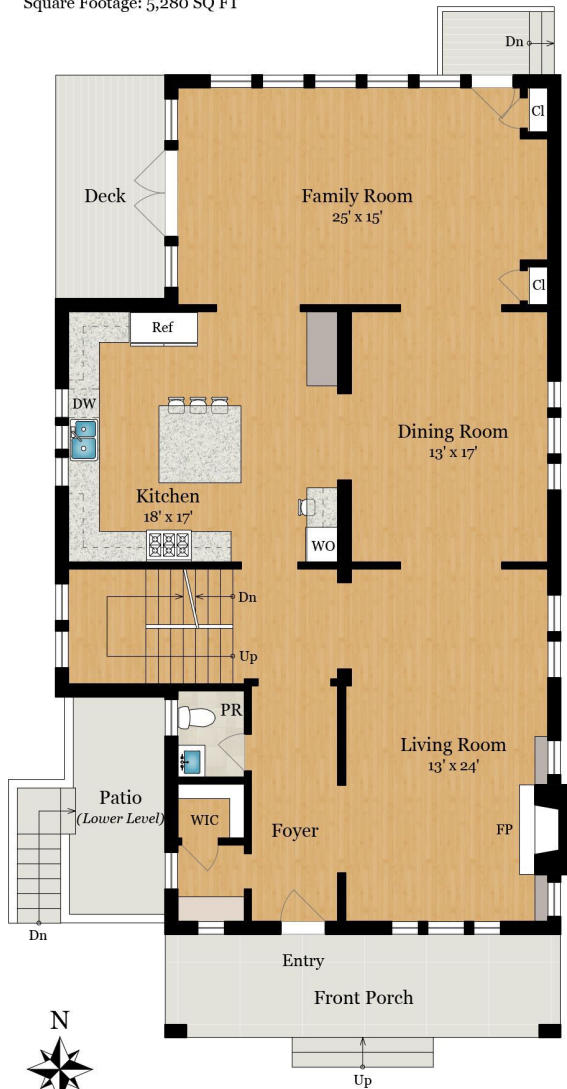
* Estimated Total Finished & Unfinished
Square Footage: 5,280 SQ FT

3903 LEGATION STREET, NW

WASHINGTON, DC 20015



DETACHED GARAGE
280 SQ FT



Rendering by Floor Plan Visuals.
All measurements are approximate. While deemed reliable, no information on these floor plans should be relied upon without independent verification.

TTR | Sotheby's
INTERNATIONAL REALTY

Presented by Jonathan Taylor, TTR Sotheby's International Realty
Tel: 202.276.3344
Email: jtaylor@ttrsir.com